

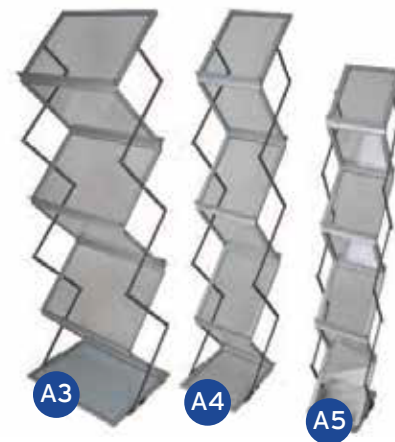
Zed-up lite is a popular literature stand, that is stylish and highly portable. Ideal for exhibitions and displays.

### Features & benefits

- High tech styling
- Double-side acrylic shelves
- Heavy duty lockable carry case included
- Collapsible
- Available in anodised silver
- 3 models to suit A3, A4 and A5 literature



Acrylic tray section  
7.5mm deep  
23mm lip



NB A4 and A3 versions have 6 pockets,  
A5 version has 7 pockets

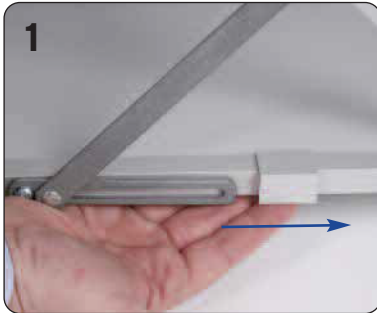
### Hardware specifications

|                                       | A3 Zed-Up Lite               | A4 Zed-Up Lite               | A5 Zed-Up Lite               |
|---------------------------------------|------------------------------|------------------------------|------------------------------|
| Assembled dimensions (mm):            | 1420 (h) x 470 (w) x 370 (d) | 1460 (h) x 256 (w) x 370 (d) | 1115 (h) x 210 (w) x 284 (d) |
| Closed dimensions (mm):               | 110 (h) x 470 (w) x 400 (d)  | 110 (h) x 256 (w) x 400 (d)  | 120 (h) x 210 (w) x 320 (d)  |
| Overall tray dimensions (mm):         | 320 (h) x 465 (w)            | 320 (h) x 255 (w)            | 235 (h) x 195 (w)            |
| Acrylic tray section dimensions (mm): | 305 (h) x 437 (w)            | 305 (h) x 220 (w)            | 218 (h) x 159 (w)            |
| Weight (kg):                          | 11 kg (24.2lbs) approx       | 7.5 kg (16.5lbs) approx      | 6 kg (13.2lbs) approx        |

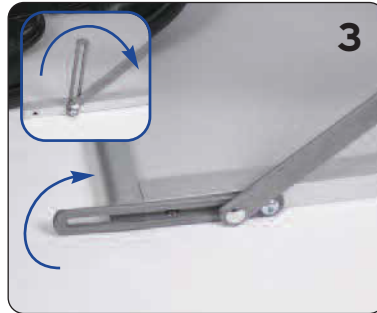
All dimensions shown are approx.

We are continually improving and modifying our product range and reserve the right to vary the specifications without prior notice. All dimensions and weights quoted are approximate and we accept no responsibility for variance. E&OE.

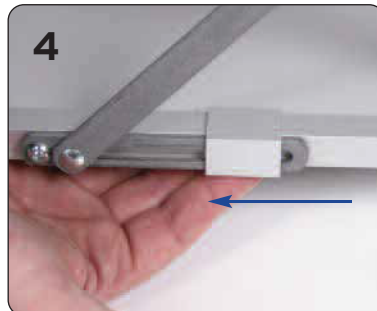
**Important:** Ensure fingers are kept clear of folding mechanism when opening and closing the unit.



Slide locking tab away from pivot arm at base of unit. Repeat for 2nd locking tab.



Whilst raising the unit note position of the pivot arms. To ensure correct assembly both pivot arms must rotate through 180 degrees.



Slide locking tab over pivot arm at base of unit. Repeat for 2nd locking tab.

