

INDOOR

A brilliant appearance
EVERY time.

XGLOO
Inflatable Display Wall

OUTDOOR

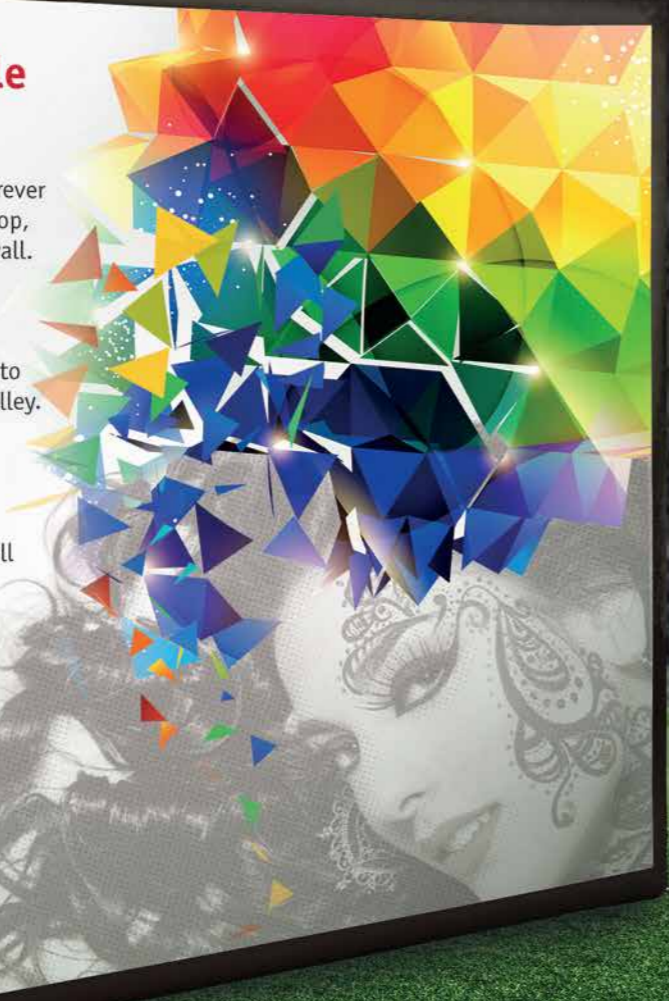
X-GL00 Inflatable Display Wall

The quick and easy solution wherever and whenever you need a backdrop, sponsor board, or presentation wall.

Thanks to its light weight and small pack size, the Inflatable Display Wall is easy to transport to your location in the provided Trolley. Setup is simple too, leaving plenty of time to handle other details for your event.

Finally, the Inflatable Display Wall is a versatile solution. With no tools and in just a few minutes the high-quality Wall Print can be removed and replaced as often as needed.

Learn why the X-GL00 Inflatable Display Wall is perfect for your event!



OUTDOOR

Inflatable Display Wall — back side shown with Aluminum Supports and Trolley

X-GL00 Inflatable Display Wall: The perfect display solution...

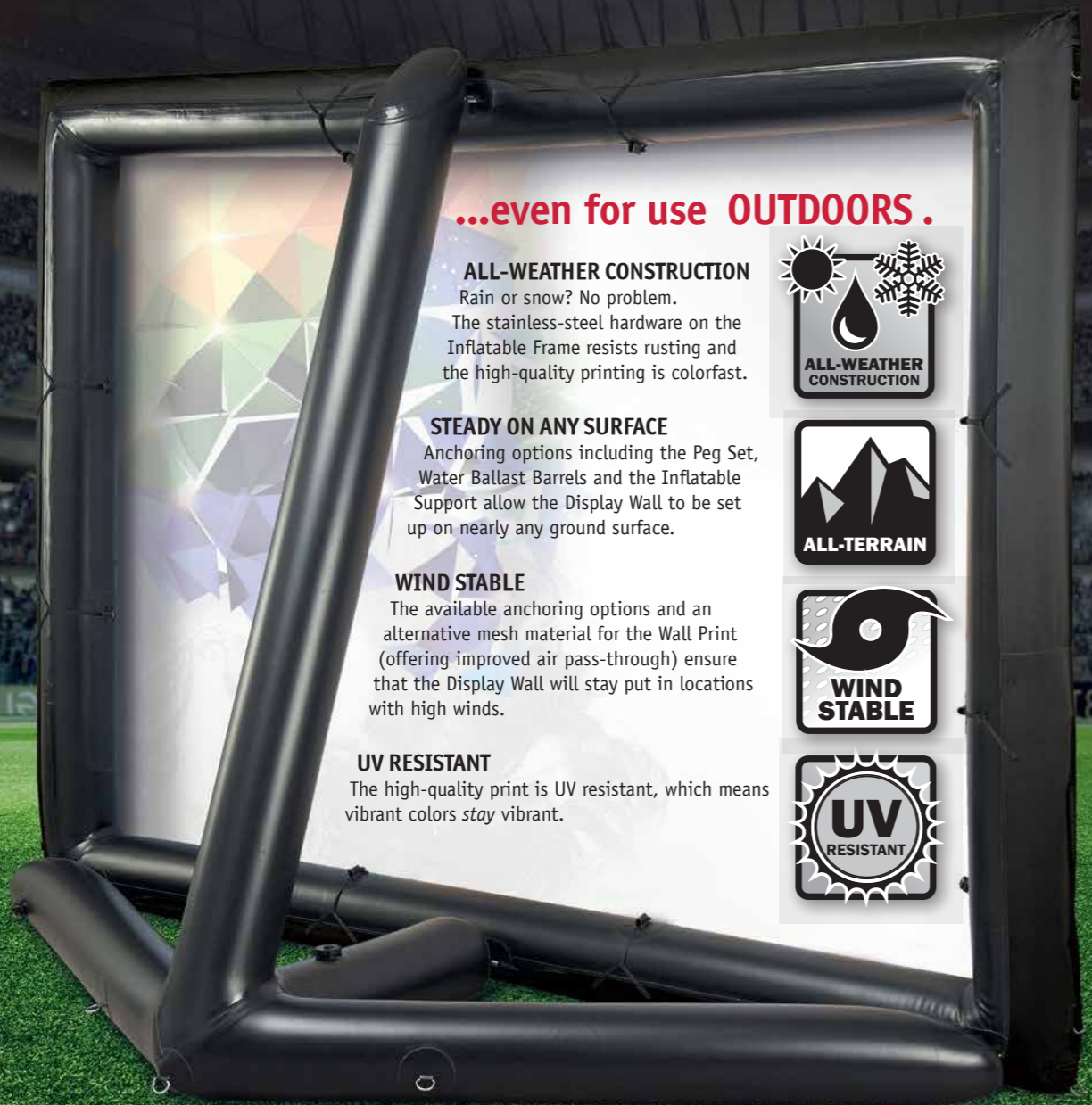
HIGH QUALITY
The rugged PVC Inflatable Frame is the backbone of the versatile Display Wall. With durable welded seams and connection points, it is built for a long life of repeated use.

VIBRANT COLOR
The Wall Print is dye-sublimation printed, offering brilliant, high-quality reproduction of your image or message. Plus, the choice of different materials for the Wall Print opens the door for various uses.

QUICK TO SETUP
Your time is precious. This is why we made sure that the Display Wall can be set up quickly — in only 2-10 minutes depending on which pump you use.

EASY TO TRANSPORT
The Display Wall and its accessories all fit in the provided wheeled Trolley for easy transport. The entire package is small enough to fit in the trunk of your car, and the Indoor Package with Aluminum Supports weighs less than a piece of checked luggage.





...even for use OUTDOORS.

ALL-WEATHER CONSTRUCTION

Rain or snow? No problem. The stainless-steel hardware on the Inflatable Frame resists rusting and the high-quality printing is colorfast.



STEADY ON ANY SURFACE

Anchoring options including the Peg Set, Water Ballast Barrels and the Inflatable Support allow the Display Wall to be set up on nearly any ground surface.



WIND STABLE

The available anchoring options and an alternative mesh material for the Wall Print (offering improved air pass-through) ensure that the Display Wall will stay put in locations with high winds.



UV RESISTANT

The high-quality print is UV resistant, which means vibrant colors stay vibrant.



Inflatable Display Wall — back side shown with Inflatable Support



EXCHANGEABLE WALL PRINTS

Do you need to feature a different message or brand at each event? If so, there is no need to purchase two Display Wall Frames. Thanks to a clever systems of toggles, you can easily swap different Wall Prints in and out as often as you need to.

SUPPORT OPTIONS FOR INDOORS OR -OUT

The optional Aluminum Supports and Inflatable Support connect easily to the Frame and pack down to fit into the provided Trolley. The Peg Set is perfect for securing the Display Wall on soft ground surfaces, and brandable Water Ballast Barrels are also available for setting up in locations with high winds.



MODULAR DESIGN

Connecting multiple Display Walls is easy to do thanks to the stainless-steel shackles found on the sides of the Inflatable Frame.

SPECIFICATIONS

INFLATABLE FRAME

- Width..... 3,00 m
- Height..... 2,25 m
- Length incl. Inflatable Support 1,29 m
- Tube Diameter 21,00 cm
- Operating Pressure 0,5 bar/7,25 PSI
- Fire Protection.....meets B1 requirements

SETUP

- Hand Pump ca. 10 min
- Electric Pump ca. 2-3 min

WALL PRINT

- Width..... 2,79 m
- Height..... 2,04 m
- Aspect Ratio 4:3

WEIGHT

- Inflatable Frame with Wall Printca. 11,00 kg
- Inflatable Support..... ca. 5,20 kg
- Aluminum Supports ca. 3,20 kg

CONTENTS OF DELIVERY

Inflatable Frame, Wall Print, Bag for Wall Print, Anchoring Lines and Line Tensioners, Trolley, Hand Pump, User's Manual, Repair Patches

INCLUDED WITH INDOOR PACKAGE

Aluminum Supports

INCLUDED WITH OUTDOOR PACKAGE

Inflatable Support and Connection Bolts, Fill Hose, Peg Set

OPTIONAL

Electric Pump, Protection Foil, Water Ballast Barrels, Mesh Wall Print





Creative Event Equipment

Since 2007, Skywalk GmbH & Co. KG has been the specialist in inflatable event tents and equipment with its X-GLOO brand. Due to our rigorous product development process and high quality standards, you can trust X-GLOO to offer attractive, reliable, and lightweight products for your display or event. With distributors in over 30 countries across 5 continents, it's easy to get a quote. Contact information for a nearby distributor is below!

INFLATABLE...



...EVENT TENTS



...DISPLAY WALL

01733 511030
sales@xdisplays.co.uk
www.xdisplays.co.uk



Official Distributor