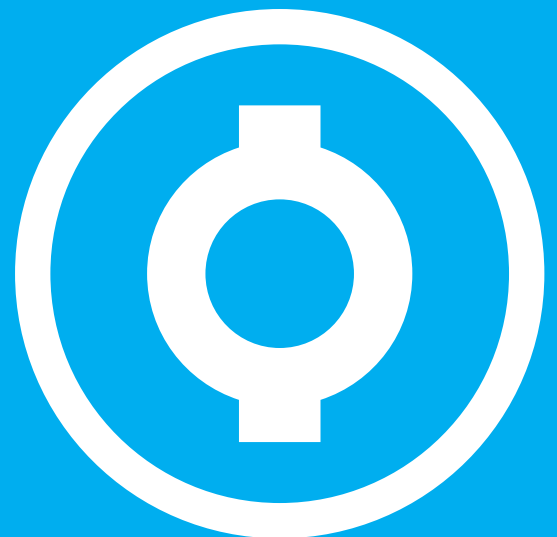
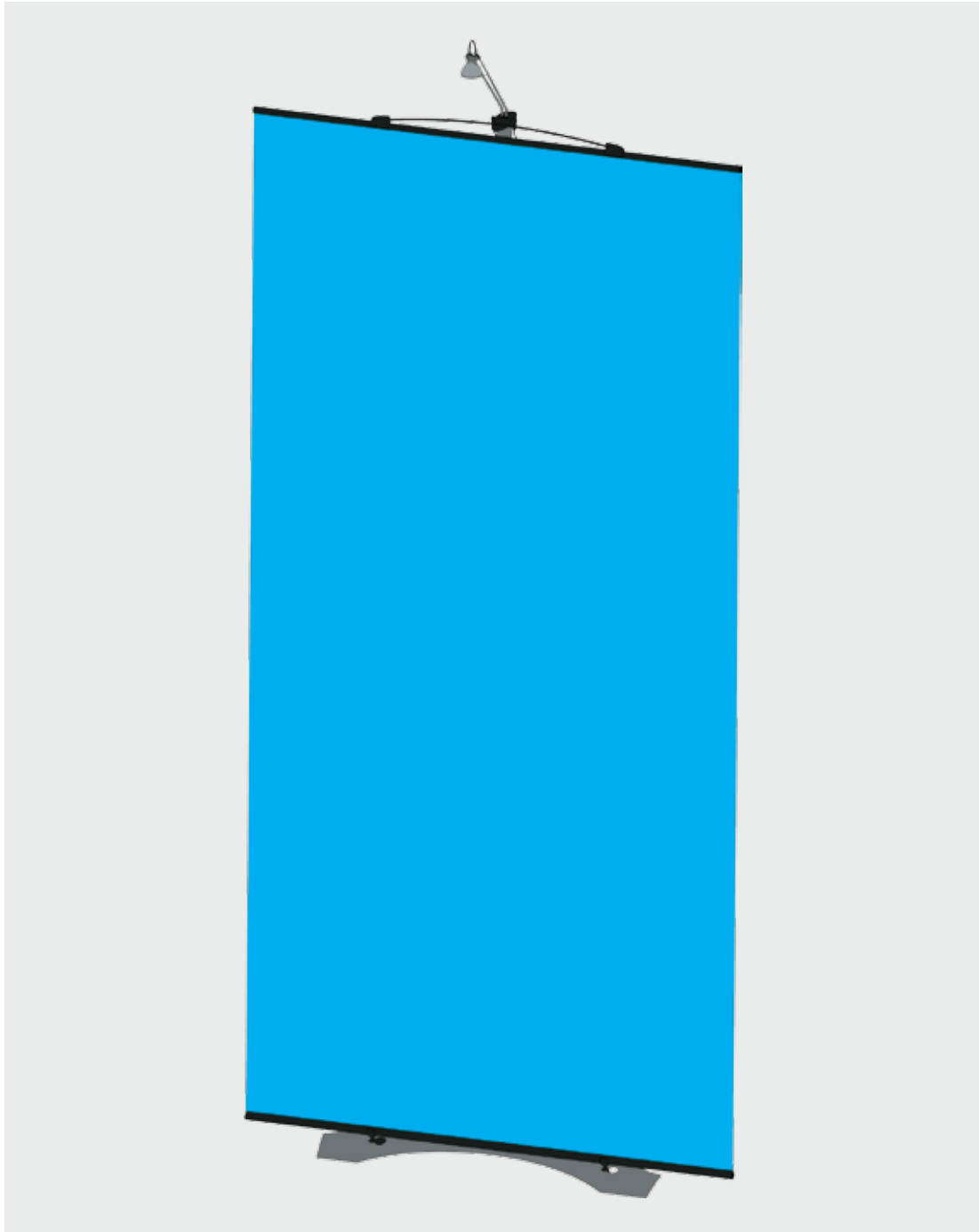


Twist®

# TWIST ORIGINAL

*product set up instructions*

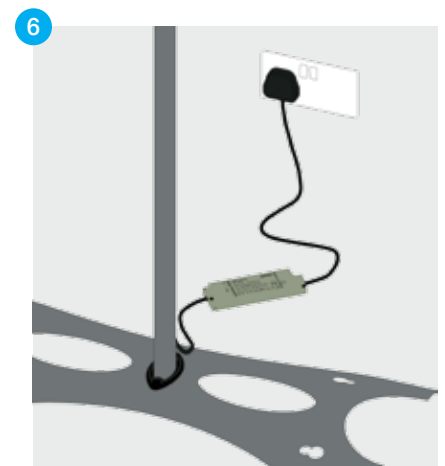
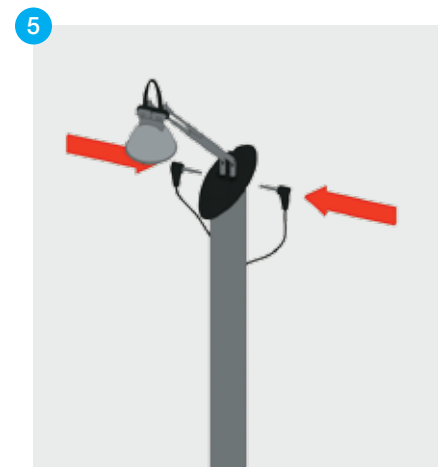
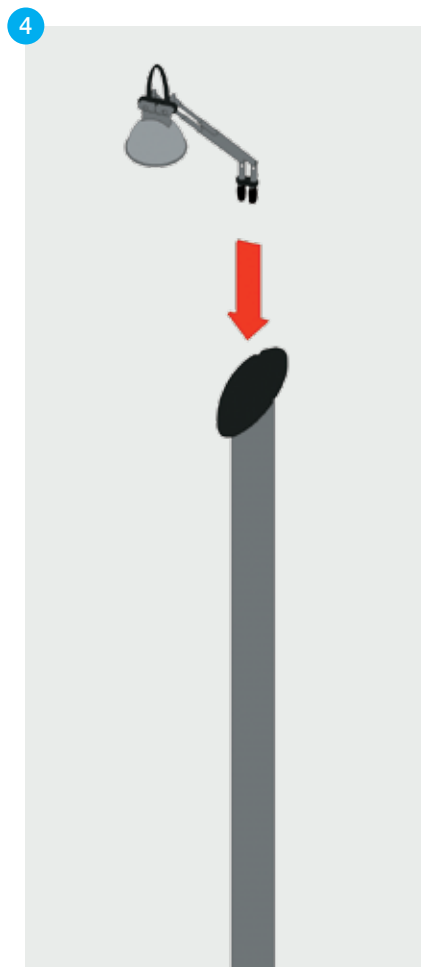
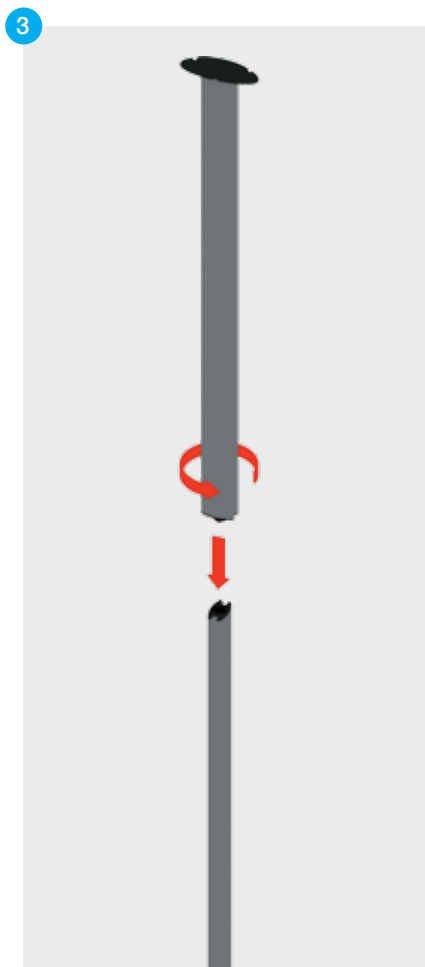
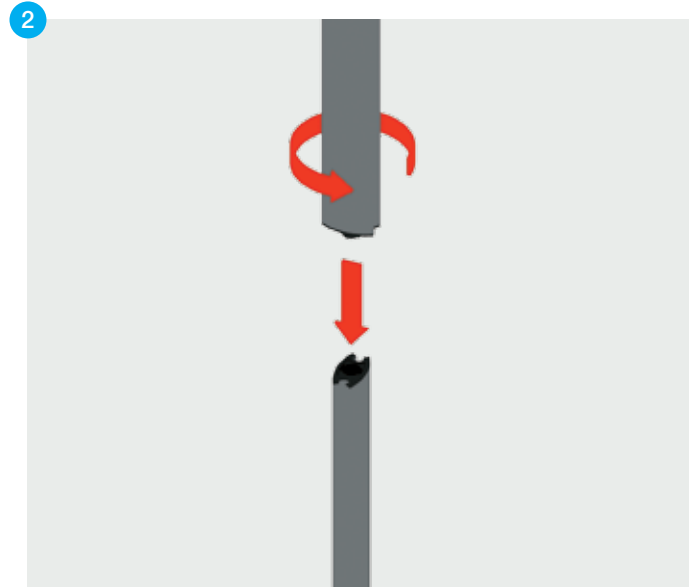
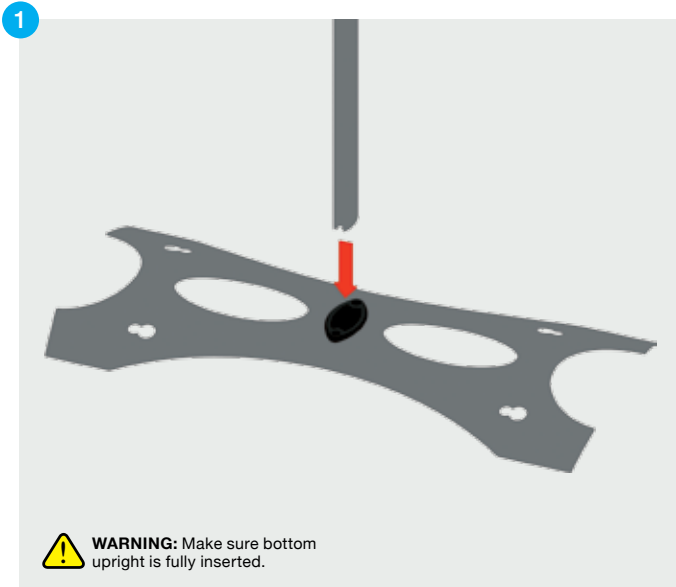




## Twist Original Setup Instructions

### Items

1x base with rubber grommet; 1x bottom upright section; 1x middle upright section; 1x top upright section; 1x light; 1x transformer; 1x graphic panel with finishing strips.



**⚠ WARNING:** Make sure bottom upright is fully inserted. Twist the upright sections clockwise to lock, anti-clockwise to open – do not force.

