



Unit shown is pro unit option with internal shelf.

This high quality counter can be used in any modular scheme, this lightweight curved counter is easily transported ideal for all exhibition applications

Features & benefits

- Anodised aluminium constructions
- Available in 30° and 45° angles
- Flat packed, easy to transport and quick to assemble
- No tools required
- 50mm modular post system
- Linear twist and lock
- Carry bag are available as extra cost options (AB11 2A for 30° AB221 for 45°)
- 30° available with top shelf LK028-002 and 45° available with top shelf LK 028-004

Hardware specifications	Graphic size (mm):
<p>Hardware dimensions (mm):</p> <p>LK028-001 1010(h) x 1025(w) x 546(d) LK028-002 1095(h) x 1025(w) x 546(d) LK028-003 1010(h) x 1531(w) x 607(d) LK028-004 1095(h) x 1531(w) x 607(d)</p> <p>Load Bearing: 50kg approx</p>	<p>Recommended graphic size (mm): Please refer to Graphic template</p> <p>Recommended graphic substrate: 2-3mm thick foam board</p>



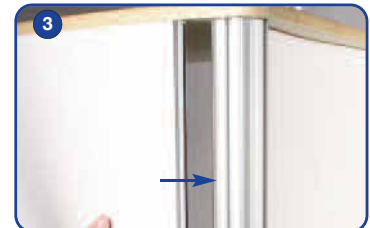
Kit includes:
1x table top,
1x base,
4x linear 50mm round post,
4x adjustable feet,
6x wing extrusion



Start by placing the top of the counter face down with the twist and lock locators facing up. Place the posts into the twist and lock locators and twist anti-clockwise to lock and clockwise to unlock

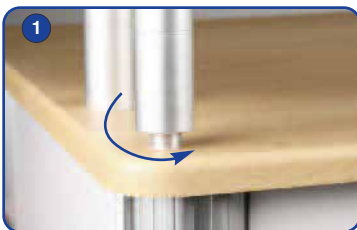


Place the base of the counter over the linear post and placed the adjustable feet through the washer and into the base of the counter. Screw into the post until in required position. Hand tighten the nut to secure into place



To attach the graphic simply click the PVC wing extrusion into the channel in the 50mm round post. Repeat this step for the remaining graphics.

Top shelf assembly (pro unit only)



Screw the stand-off's down onto the stand-off locators until fully secure. Repeat this for the remaining stand-offs



Place the pre-drilled holes of the top shelf over the stand-off until in required position



Screw down the top of the stand-off over the top shelf until fully secure, repeat these steps for the rest of the stand-off's

Optional internal shelf assembly



To attach the internal shelf insert the twist and lock pole into the locator on the shelf



Lift the internal shelf to the shelf locator on the base side of the table top. Twist each pole into place until fully secure