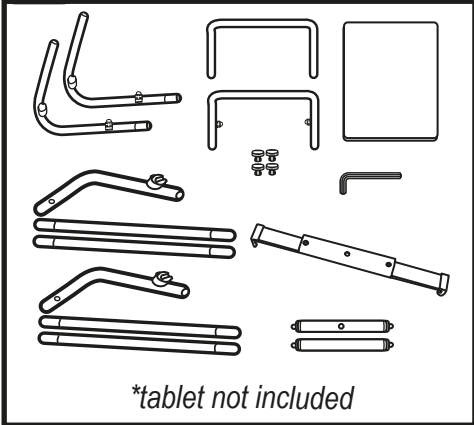




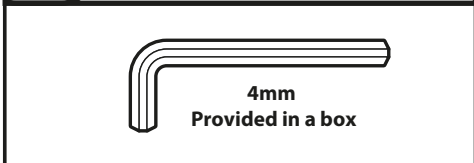
**PARTS (NOT TO SCALE)**



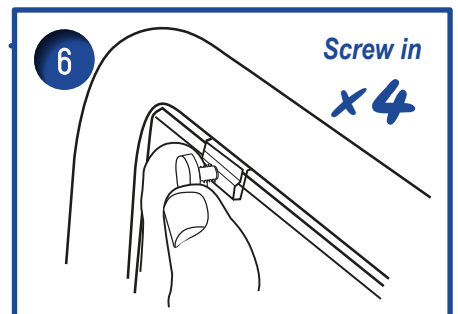
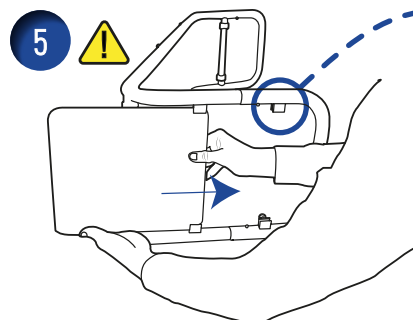
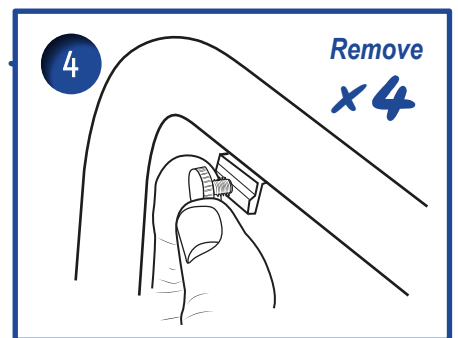
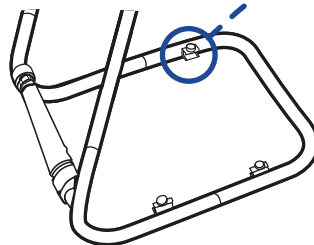
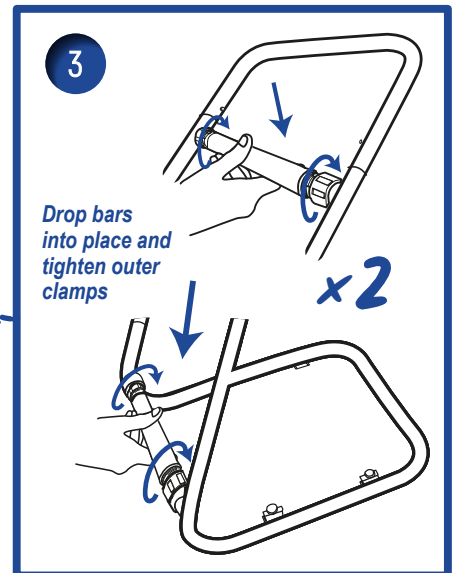
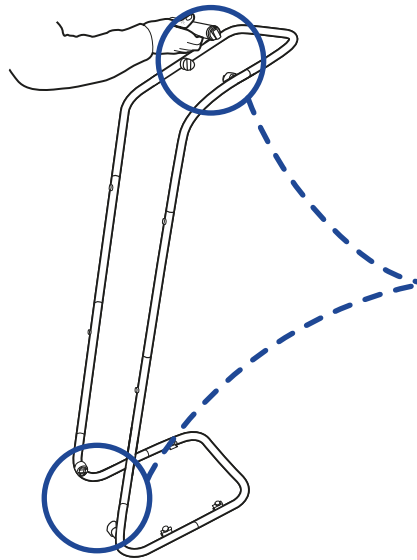
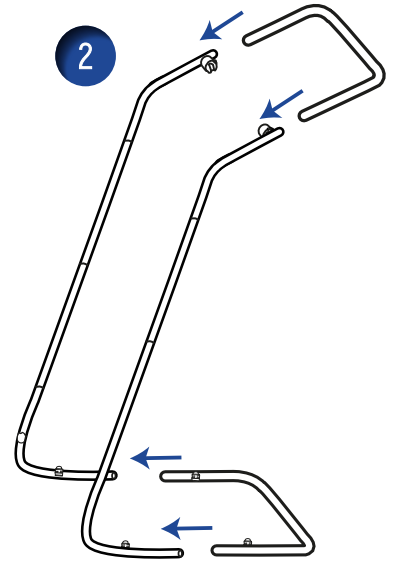
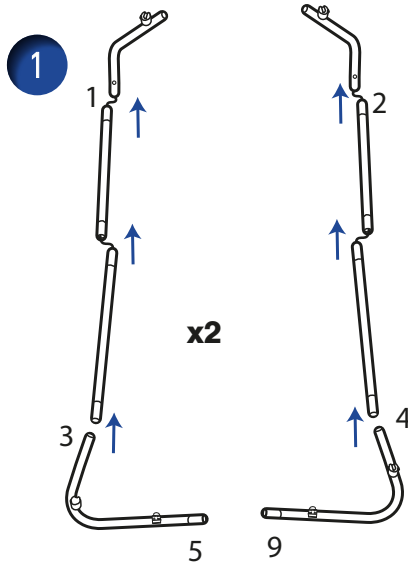
**OPTIONAL (NOT TO SCALE)**



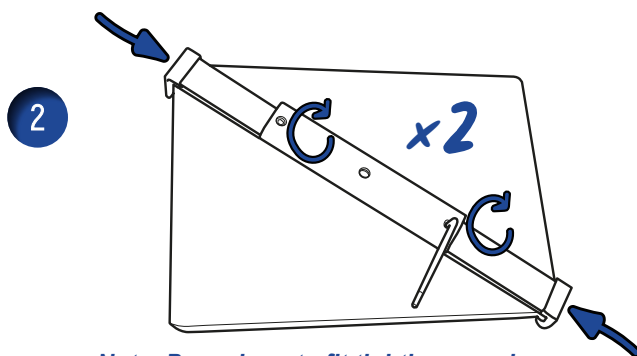
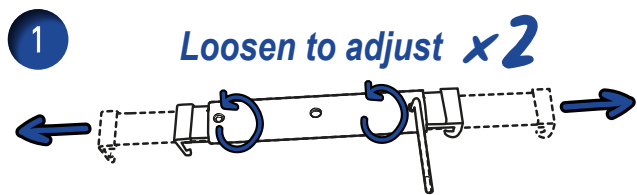
**TOOLS REQUIRED**



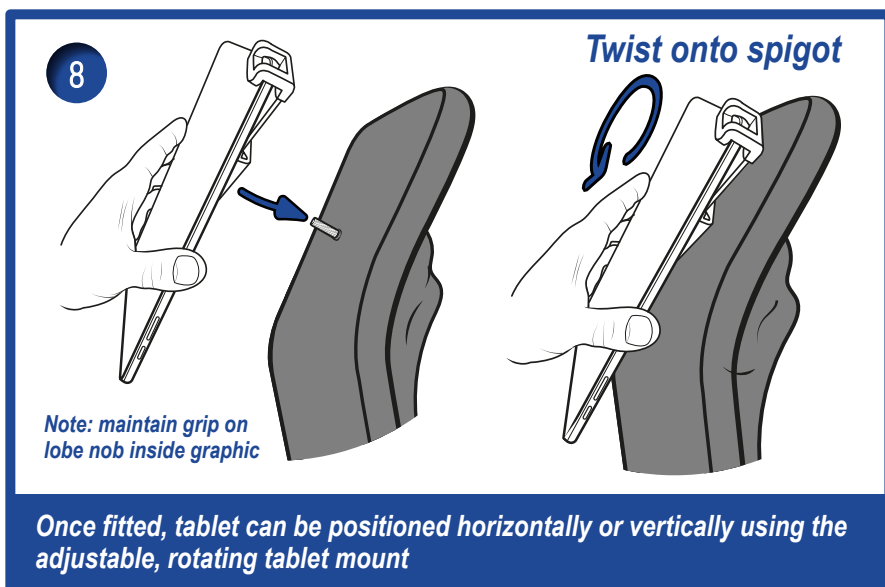
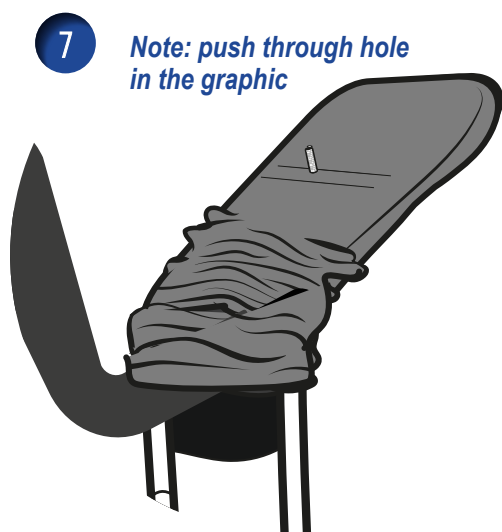
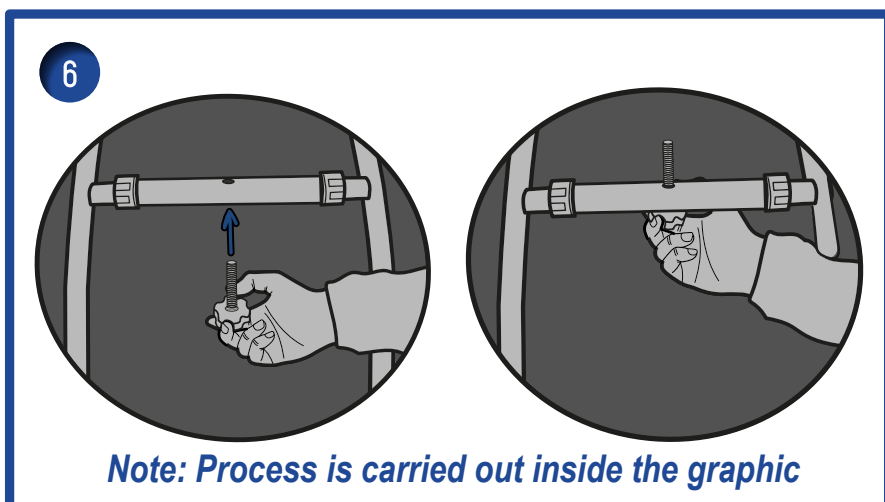
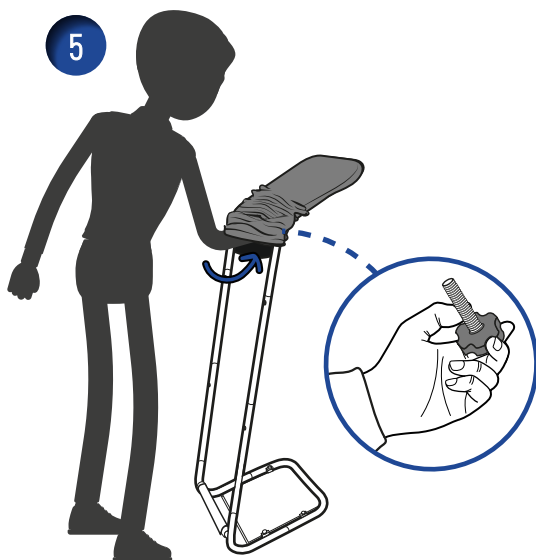
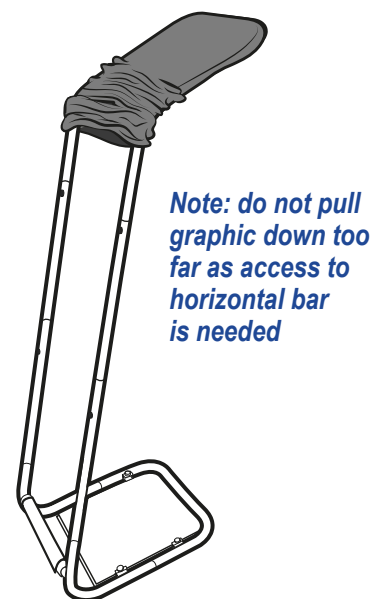
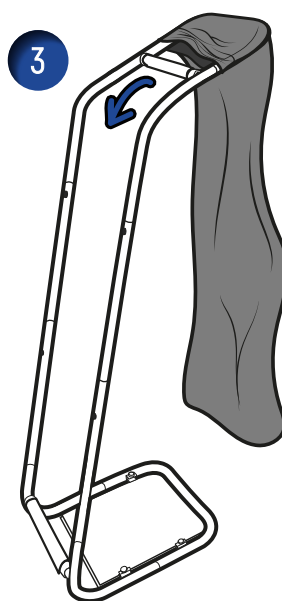
**FOR ATTENTION**

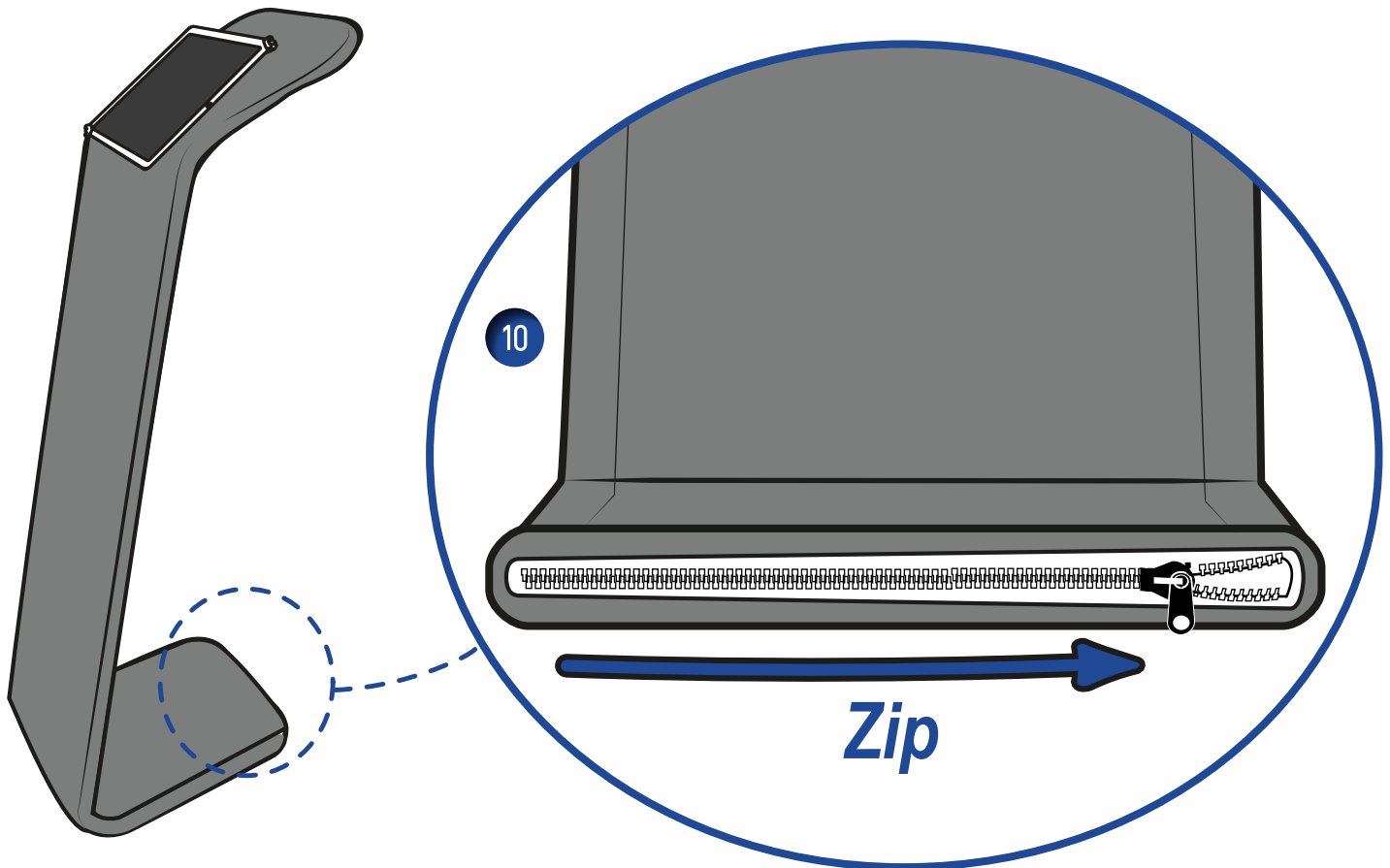
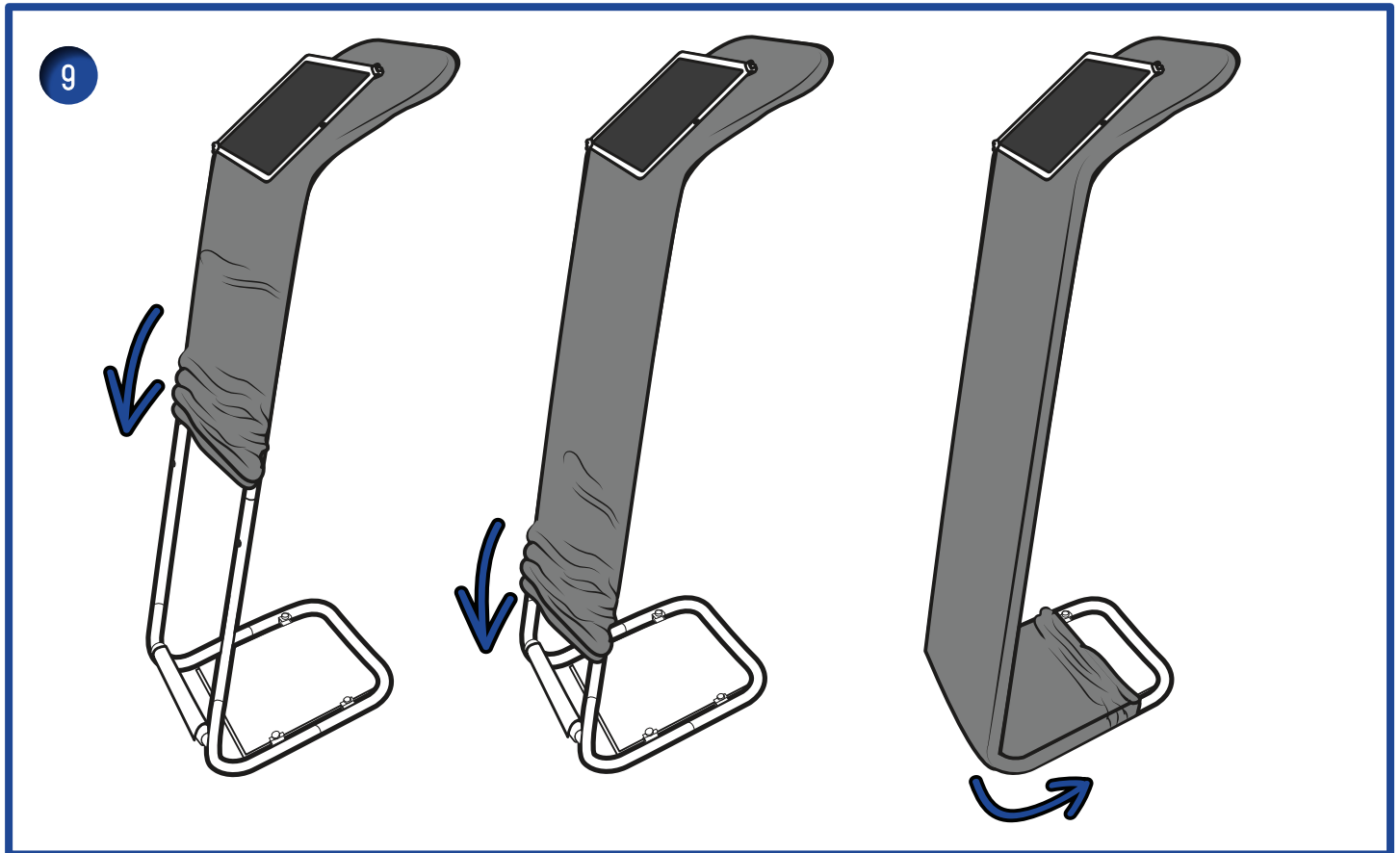


## Installing Tablet Holder/Fitting Graphic

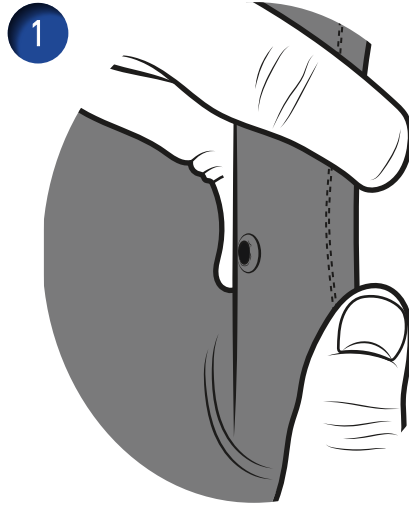
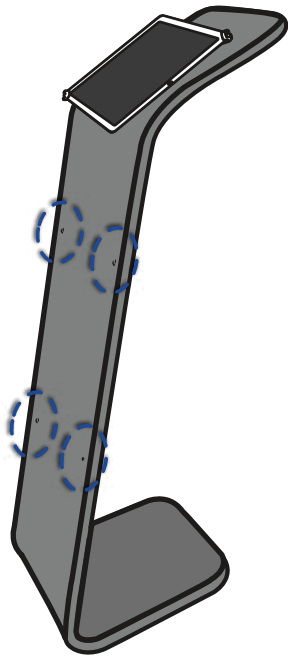


*Note: Press bars to fit tightly around corner of tablet\* and tighten using Allen Key*

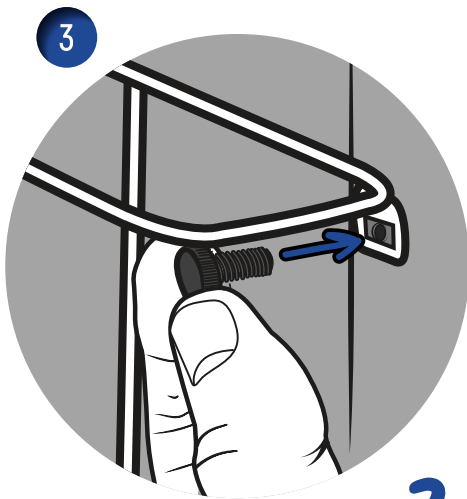
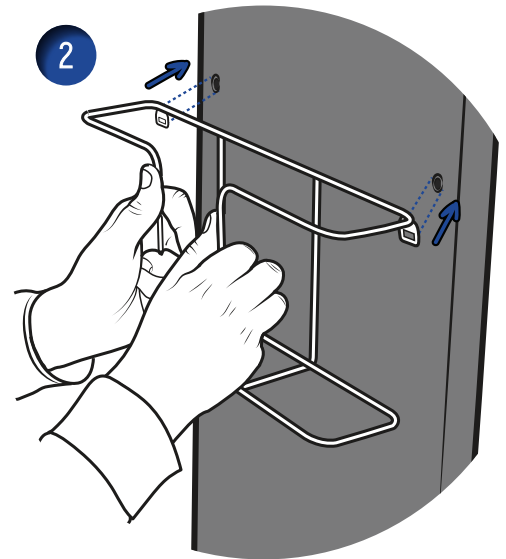




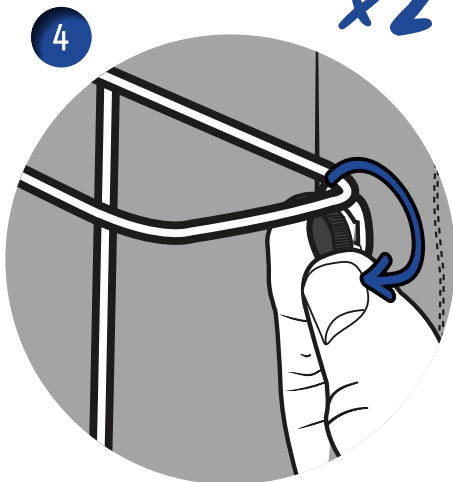
## Installing Optional Literature Rack



*Find the holes in the graphic*

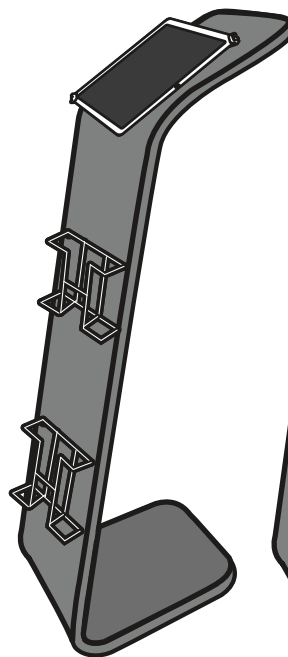


**x2**

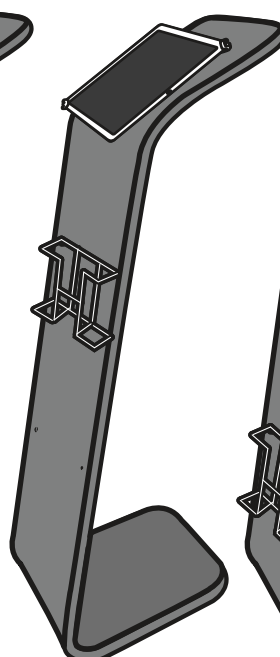


### POSSIBLE ARRANGEMENTS

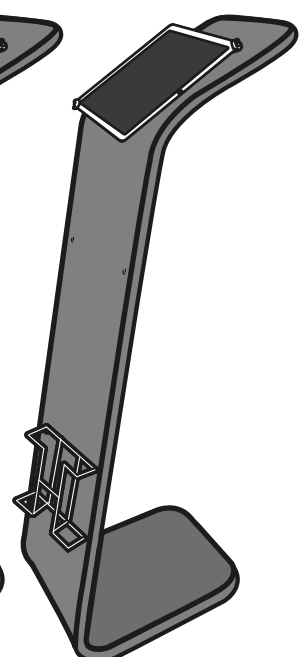
**A**



**B**



**C**



*(Option A requires two rack kits)*